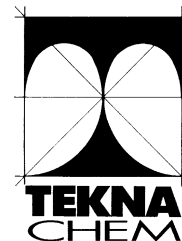




## TECHNICAL DATA SHEET



# ACRIFLEX GUAINA

LIQUID ELASTOMERIC WATERPROOF SHEATH  
MONO COMPONENT WATER-BASED

## DESCRIPTION

**ACRIFLEX GUAINA** is a liquid elastomeric waterproof sheath mono component water-based, composed by resins styrene- acrylic modified and plasticized.

## GENERAL FEATURES

**ACRIFLEX GUAINA** has a high elasticity, excellent adhesion, high resistance to water, weather and temperature changes. It is walkable if reinforced with geotextile.

## APPLICATIONS

**ACRIFLEX GUAINA** is also used for supports coating where it's necessary to get a waterproof elastic finish: plaster with micro-cracks with water infiltration, roof tiles, etc. It's also used in terraces and roofs waterproofing and for renovation of old waterproofing performed with bituminous sheaths. It's also used as external elastic coating for concrete structures.

## TECHNICAL FEATURES

Versions	colored
Colors available	white, <u>grey</u> , red, green
Density (kg/dm <sup>3</sup> )	1,29 ± 0,03
Outdoor durability -dust (at 20°C, UR 60%)	4 – 5 hours
Complete setting time	3 days
Working temperature	from – 20 °C to + 75 °C
Application temperature	from + 7 °C to + 35 °C
Recommended thickness	400-500 micron
Inflammability	fireproof

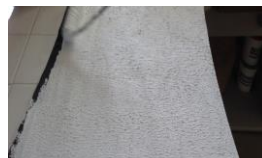
## PREPARATION

Mix the product carefully.  
After careful mixing, the product is ready to use and it requires no dilution.  
For any further dilution use water for a maximum of 5%.

## HOW TO USE IT

The surface to treat must be dry, clean, degreased and free from dust or other absorbent agents and polluted. The very smooth surfaces, such as ceramic or glazed brick, at first must be roughened by rotating disc sander or shot peening. In case of water stagnation it's necessary to regularize the surface before the application of the product.

It can be applied by brush, roller or spray. It can be applied without any primer on new construction supports without dust and well cohesive.



It's necessary to pretreat the support with fixative **Tek-fix** if you apply it on concrete or old coatings made with polyurethane foams.

At the end of application is suitable to wait at least 48 hours so the surface is perfectly walkable.

Avoid the application during adverse weather conditions.

In order to obtain excellent waterproofing is recommended to arm the coating with geotextile.

Attention: the product reticulates only in the presence of UV rays

## YIELD

Averaged 1 kg ACRIFLEX SHEATH treat about 1 m<sup>2</sup> of non-armed surface; about 2 kg of **ACRIFLEX GUAINA** for 1 m<sup>2</sup> of armed surface.

## PACKAGING

**ACRIFLEX GUAINA** is sold in:  
- pail of 20 kg  
The product is ready to use and it requires no dilution.

## CONSERVATION

The product can be stored in original and intact containers, protected from frost and excessive heat, for about 12 months.

## CAUTIONS

During normal using conditions the product is not harmful to people handling.  
During application, do not eat, drink or smoke, use protective clothing such as gloves, goggles and mask.



**TEKNA CHEM** S.r.l.

Stabilimento: Renate (MB) - Via Sirtori, z.i. 20838  
Tel. +39 0362.91.83.11 Fax: +39 0362.91.93.96  
E-mail: info@teknachem.it

The information contained in this data sheet, while representing the current state of knowledge, do not release the user from the accurate preliminary tests in their conditions of employment and exercise. We assume no responsibility for the improper use of the product